

2009 Equinox Marathon and Equinox Marathon Relay

Summary of Entries and Finishers

Marathon Summary						
	Women		Men		Total	
Entries / Pct of Field	225	48%	248	52%	473	
Finishers / Pct. Of All Entries	194	46%	227	54%	421	
(Fin. As Pct. of Wmn/Men/Total)	(86%)		(92%)		(89%)	

Entries	Women		Men		Total	
9 and under	0	0%	2	0%	2	0%
10-11	0	0%	2	0%	2	0%
12-14	2	0%	4	1%	6	1%
15-17	4	1%	2	0%	6	1%
18-29	51	11%	73	15%	124	26%
30-34	27	6%	20	4%	47	10%
35-39	27	6%	36	8%	63	13%
40-44	21	4%	18	4%	39	8%
45-49	35	7%	27	6%	62	13%
50-54	22	5%	23	5%	45	10%
55-59	21	4%	20	4%	41	9%
60-64	5	1%	10	2%	15	3%
65-69	3	1%	3	1%	6	1%
70-74	3	1%	2	0%	5	1%
75-79	0	0%		0%	0	0%
80 and over	0	0%		0%	0	0%
no DOB given	4	1%	6	1%	10	2%
	225		248		473	

Finishers/Percent of Entries	Women		Men		Total	
9 and under	0		1	50%	1	50%
10-11	0		2	100%	2	100%
12-14	1	50%	4	100%	5	83%
15-17	3	75%	2	100%	5	83%
18-29	42	82%	61	84%	103	83%
30-34	23	85%	20	100%	43	91%
35-39	25	93%	34	94%	59	94%
40-44	20	95%	17	94%	37	95%
45-49	33	94%	26	96%	59	95%
50-54	17	77%	21	91%	38	84%
55-59	19	90%	18	90%	37	90%
60-64	3	60%	10	100%	13	87%
65-69	3	100%	3	100%	6	100%
70-74	2	67%	2	100%	4	80%
75-79	0		0		0	
80 and over	0		0		0	
no DOB given	3	75%	6	100%	9	90%
	194	86%	227	92%	421	89%

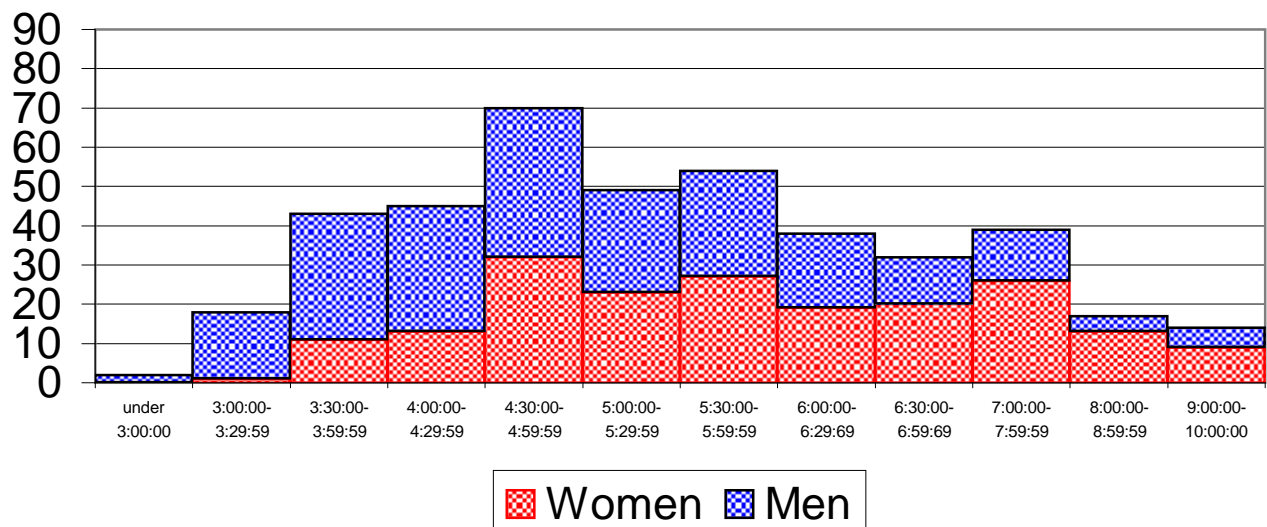
2009 Equinox Marathon and Equinox Marathon Relay

Summary of Entries and Finishers

Finishers	Women		Men		Total	
under 3:00			2	0.9%	2	0.5%
under 3:30	1	0.5%	19	8%	20	5%
under 4:00	12	6%	51	22%	63	15%
under 4:30	25	13%	83	37%	108	26%
under 5:00	57	29%	121	53%	178	42%
under 5:30	80	41%	147	65%	227	54%
under 6:00	107	55%	174	77%	281	67%
under 6:30	126	65%	193	85%	319	76%
under 7:00	146	75%	205	90%	351	83%
under 8:00	172	89%	218	96%	390	93%
under 9:00	185	95%	222	98%	407	97%
under 10:00	194	100%	227	100%	421	100%

Finish Time Ranges	Women		Men		Total	
under 3:00:00			2	0.9%	2	0.5%
3:00:00-3:29:59	1	0.5%	17	7%	18	4%
3:30:00-3:59:59	11	6%	32	14%	43	10%
4:00:00-4:29:59	13	7%	32	14%	45	11%
4:30:00-4:59:59	32	16%	38	17%	70	17%
5:00:00-5:29:59	23	12%	26	11%	49	12%
5:30:00-5:59:59	27	14%	27	12%	54	13%
6:00:00-6:29:59	19	10%	19	8%	38	9%
6:30:00-6:59:59	20	10%	12	5%	32	8%
7:00:00-7:59:59	26	13%	13	6%	39	9%
8:00:00-8:59:59	13	7%	4	2%	17	4%
9:00:00-10:00:00	9	5%	5	2%	14	3%

Finish Time Distribution



2009 Equinox Marathon and Equinox Marathon Relay Summary of Entries and Finishers

Relay Summary							
	Women		Men		Mixed		Total
Relay Entries / Team	50	40%	14	11%	60	48%	124
Open	45	41%	11	10%	54	49%	110
Masters	5	36%	3	21%	6	43%	14
Relay Finishers / Team	50	40%	14	11%	60	48%	124
Open	45	41%	11	10%	54	49%	110
Masters	5	36%	3	21%	6	43%	14
(Fin. As Ptc of Starters)		100%		100%		100%	100%
Relay Entries / Individual	249	67%	123	33%			372
Leg 1	86	69%	38	31%			
Leg 2	77	62%	47	38%			
Leg 3	86	69%	38	31%			
Relay Finishers / Individual	249	67%	123	33%			372
Leg 1	86	69%	38	31%			
Leg 2	77	62%	47	38%			
Leg 3	86	69%	38	31%			
(Fin. As Ptc of Starters)		(100%)		(100%)			(100%)

Total Entries							
	Women		Men		Total		
Marathon	225	25%	248	28%	473	53%	
Ultramarathon	24	3%	30	3%	54	6%	
Relay	249	28%	123	14%	372	41%	
TOTAL	498	55%	401	45%	899		

Total Finishers							
	Women		Men		Total		
Marathon	194	23%	227	27%	421	50%	
(Fin. As Ptc of Entries)		(22%)		(25%)		(47%)	
Ultramarathon	24	3%	23	3%	47	6%	
(Fin. As Ptc of Entries)		(3%)		(3%)		(5%)	
Relay	249	30%	123	15%	372	44%	
		(28%)		(14%)		(41%)	
TOTAL	467	56%	373	44%	840	100%	
(Fin. As Ptc of Entries)		(52%)		(41%)		(93%)	

NOTE: All 124 teams finished the event, but three teams were removed from the results:

two teams were removed because some of the team members did not register or pay

one team was removed from the results because they did not pass through exchange #2

NOTE: Two people were removed from the results because they did not cover the whole course